



衛生福利部國民健康署

Health Promotion Administration, Ministry of Health and Welfare

COVID-19

Guidance for

Long-term Care Facility



COVID-19

Guidance for

**Long-term
Care Facility**

Faced with the

Coronavirus Disease (COVID-19)

What role does the long-term care (LTC) facility play?

Use this guideline to learn the answers!

▼ **Subject**

▼ **Scenario**

1. Training of Employees

- Infection Prevention and Control Training and Practice Drill
- Updated information about the epidemic



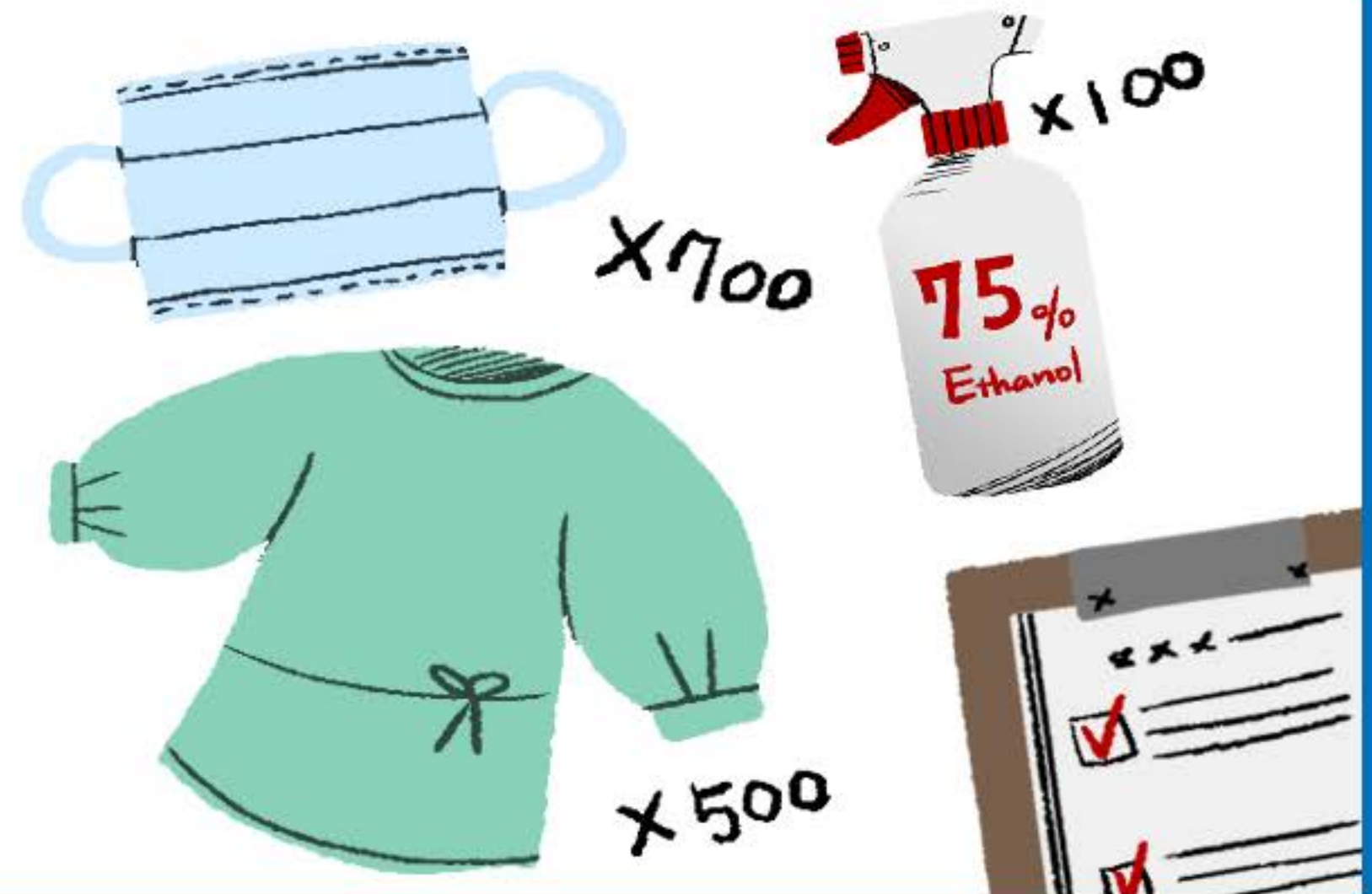
Facility Manager

2. Devise a Response plan

- Newly admitted & discharge management plan for residents
- workforce backup support mechanism
- isolation & placement plan



3. Step up the inventory check of epidemic prevention supplies



4. Enhance environment sanitation



Use **1000ppm**
bleach to disinfect



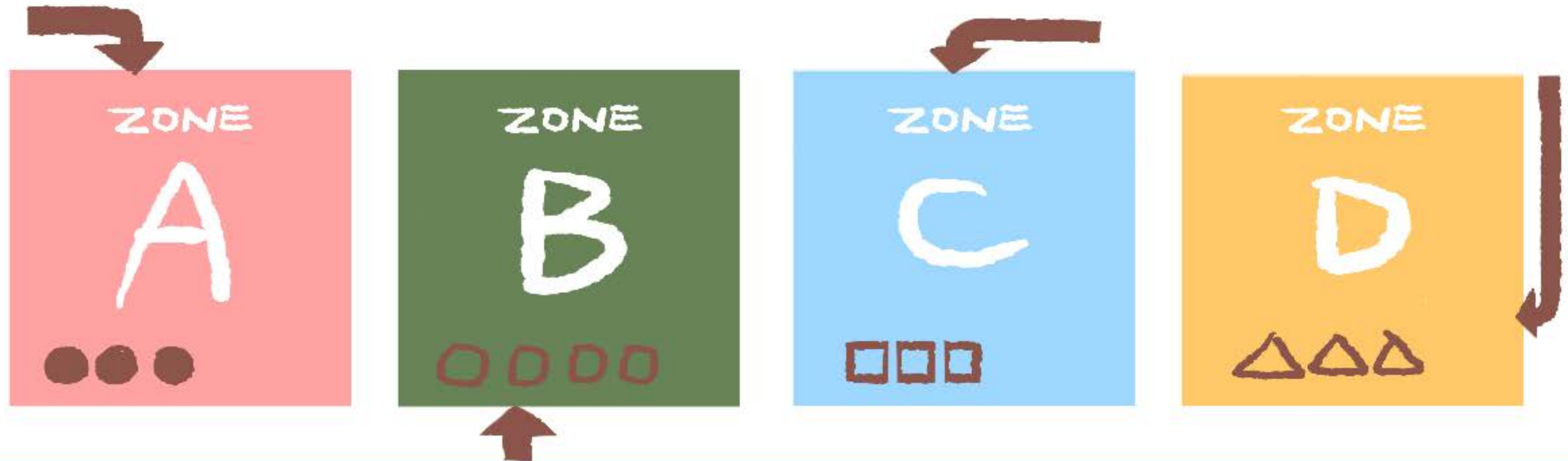
Increase
frequency of
cleaning



- Increase hand washing stations
- Post instructions for washing hands
- Provide paper towel

5. Work Zone and Foot Traffic Separation

Including the work locations of administrative staff, medical carer or caregivers, and cleaning staff.



6. Rules for Visitation



Remind visitors that the residents can be reached with video call, LINE app or telephone.



Remind staff to frequently check on the residents and show increased caring.



If residents are suspected to have specific psychological needs, please seek assistance from professionals or call the **1925** hotline for consultation.

7. Increase monitoring of resident' s symptoms

- Fever
- Cough
- Shortness of Breath
- Full Body Fatigue



8. Create a friendly & inviting atmosphere

E.g. play soft music in the facility if appropriate.



9. If suspected case is recognized

If suspected cases (care service users or employees) are recognized, **notify the health authority** immediately, as well as the **central and local competent authorities**.

Follow the instruction to wear mask and immediately seek medical attention.

Notify the physician of the **TOCC (Travel history, occupation, contact history** (e.g. employee's family members) and **cluster event** for timely diagnosis and reporting.



Daily Life in the LTC facility

Various Staff

Nursing staff



Cleaning staff



Security staff



Kitchen staff



Administrative staff



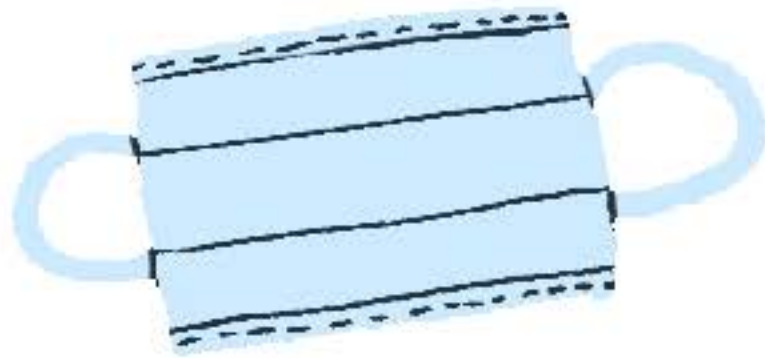
Caregivers



Staff members

Daily precaution for staff members

Wear a mask
when working



Measure body
temperature daily in the
morning and evening



Wash hands frequently
and use ethanol
to disinfect



Staff members

Daily precaution for staff members

Staff members experiencing **any of the** following should **stay at home:**



1. Staff members providing direct care services during the 14-day self-health management period
2. Staff member has fevers or respiratory symptoms
3. Staff members is at risk of infection with COVID-19



Staff members

Explain to the residents and their family

The reasons of the changes and restriction to the facility events.

Although you cannot visit her at the moment, rest assured that we will take good care of her!

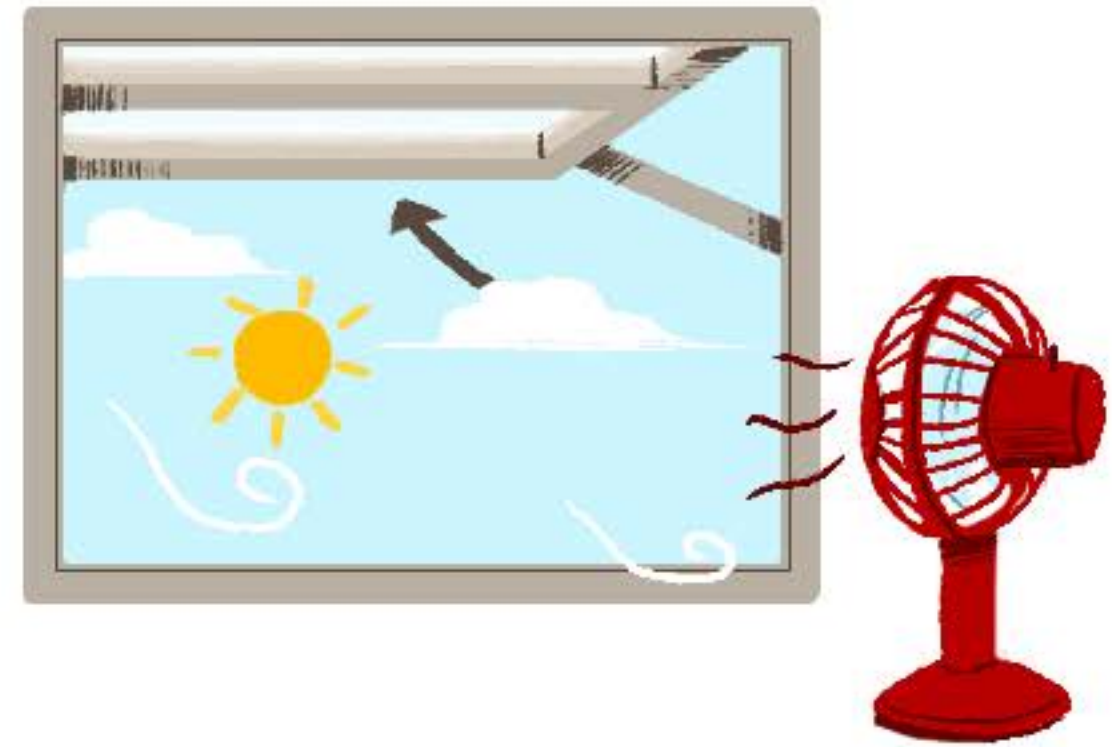
**Don' t
worry!**



When cleaning the environment



1. Wear gloves
when working



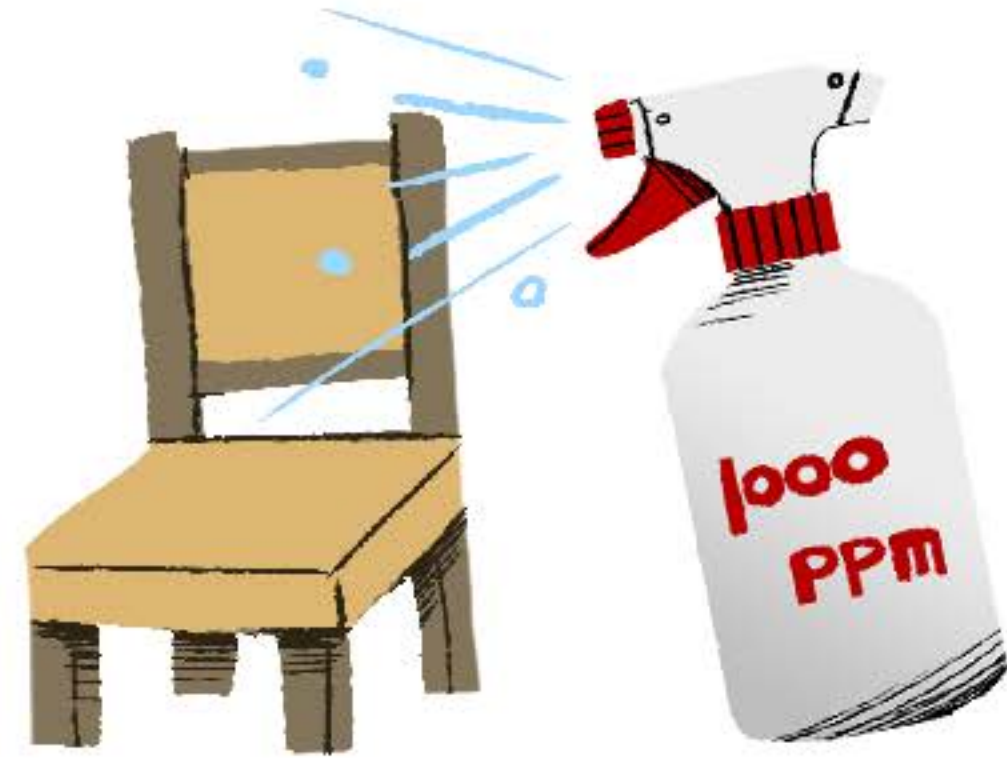
2. Maintain
ventilation& brightness

Staff members

When cleaning the environment



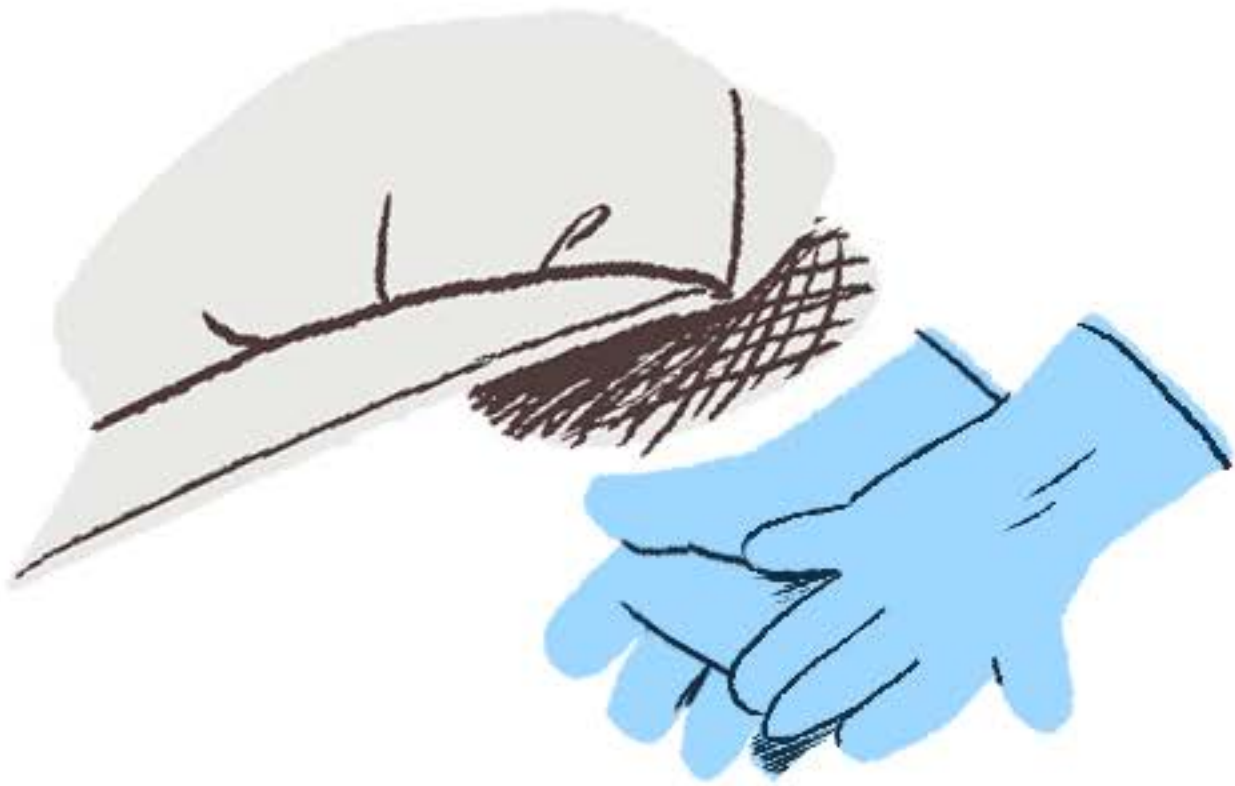
3. Work in separate zones and floors, do not work across zones.



4. Use **1000ppm** disinfectant to clean floor, tables, chairs, stair handrails and elevator buttons.

Kitchen staff

When preparing meals



1. Wear gloves and sanitation caps during work



2. Wash hands before and after handling foods and before serving meals.

Caregivers

Before and after meals



Assist resident to
wet or dry wash
their hands.

Resident

During meals



Wash hands before
and after eating



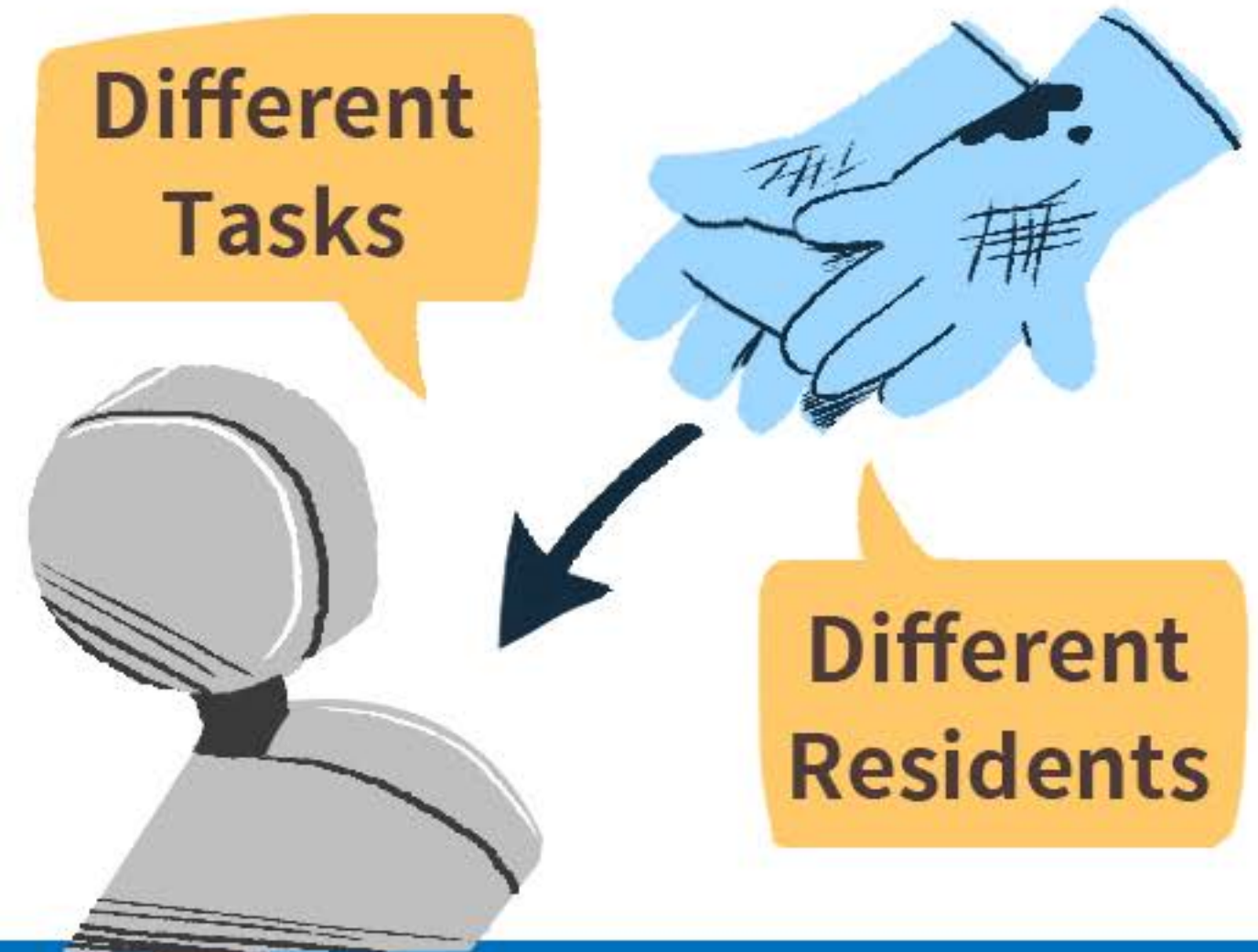
Avoid chatting
during meals

Staff members

When doing nursing duties or care services

1. Wash hands and use ethanol to disinfect, and change gloves

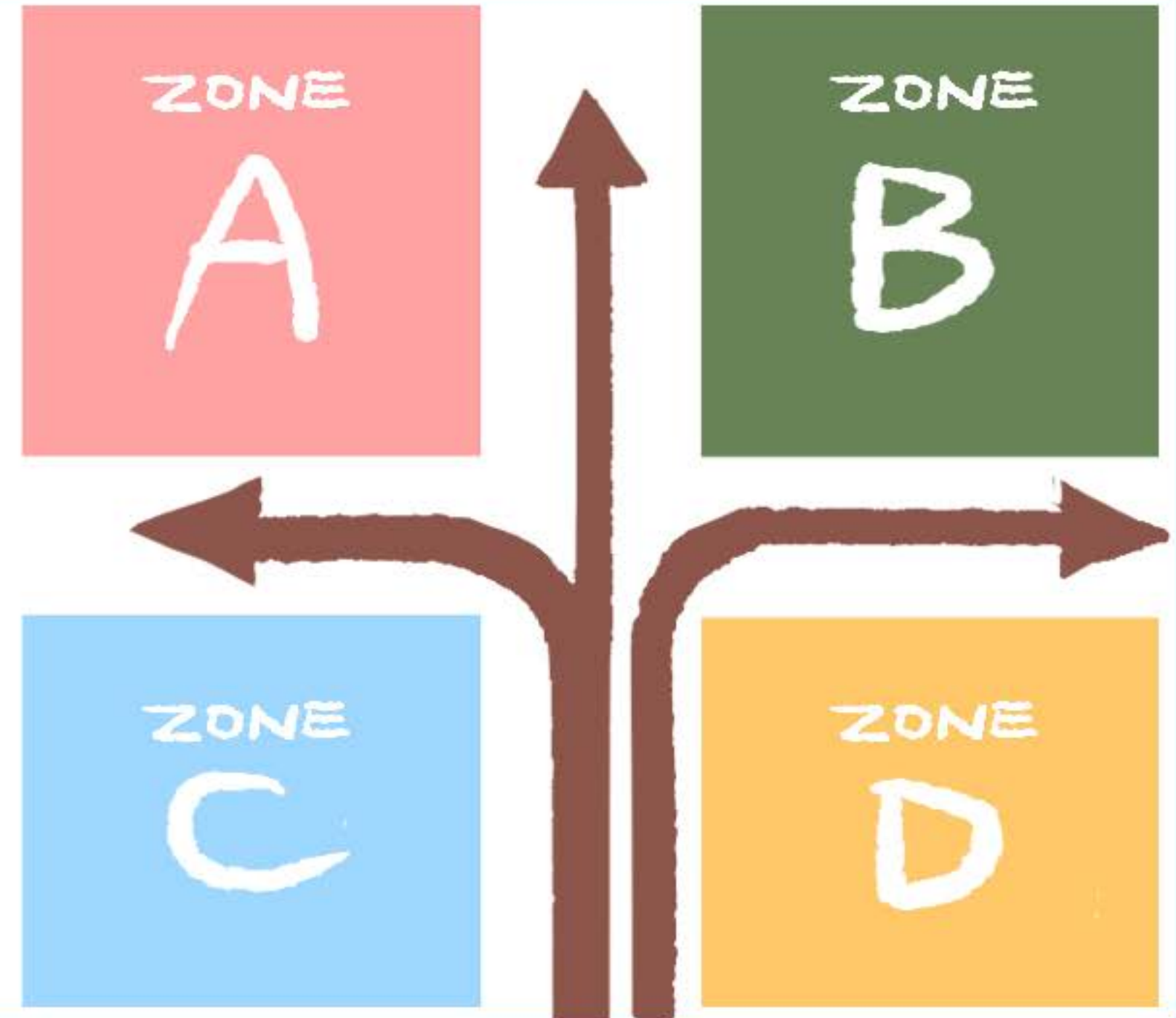
Changing diapers, aspirating sputum, tube feeding, urinary catheters, wound dressing and care, bathing assistance, face washing, teeth brushing, making beds and assist in clothe change.



Staff members

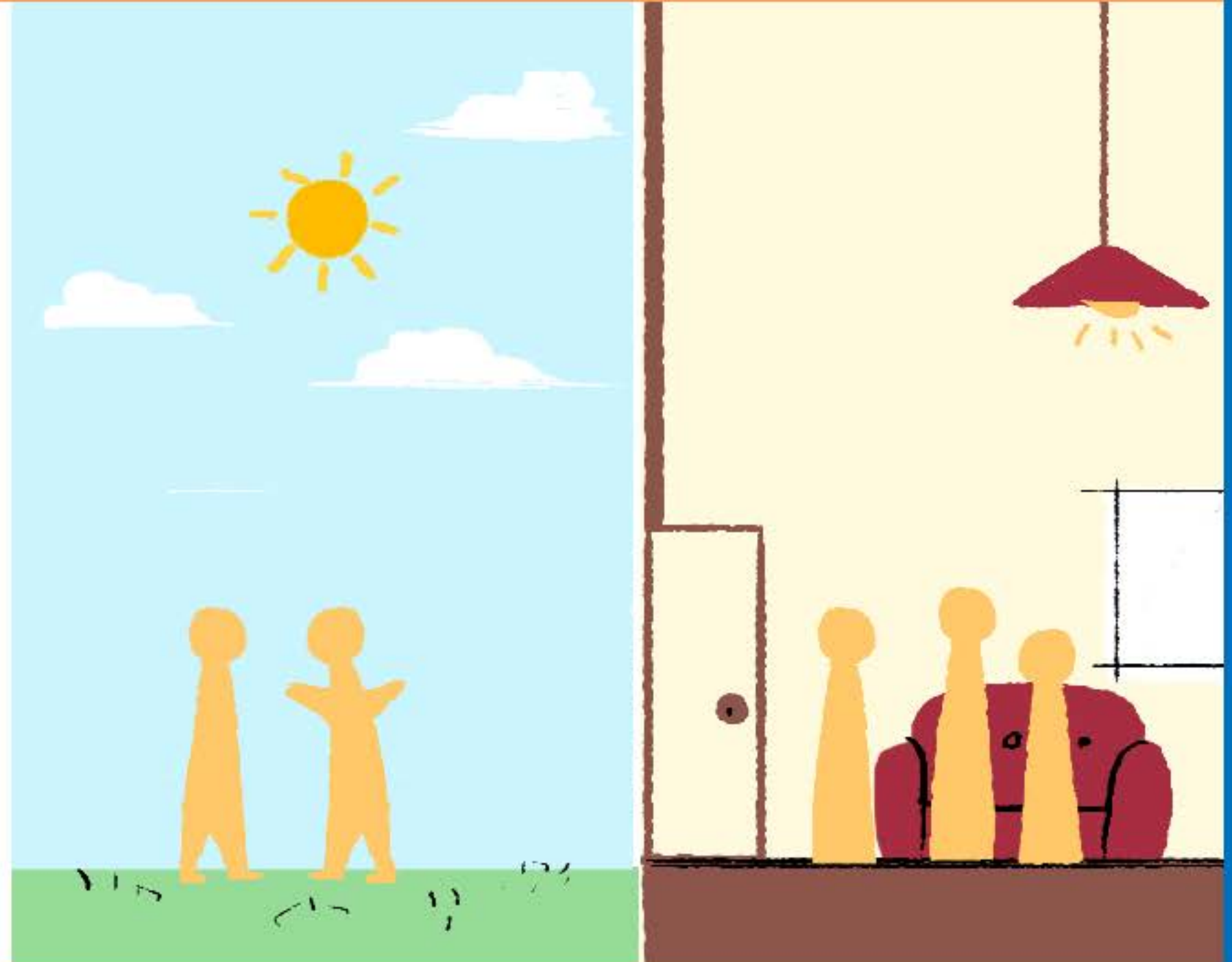
When doing nursing duties or care services

2. Work in separated zones and traffic lines, do not work across zones.



When accompanying residents

1. Carry out activities in different
 - Locations
 - Floors
 - Schedules

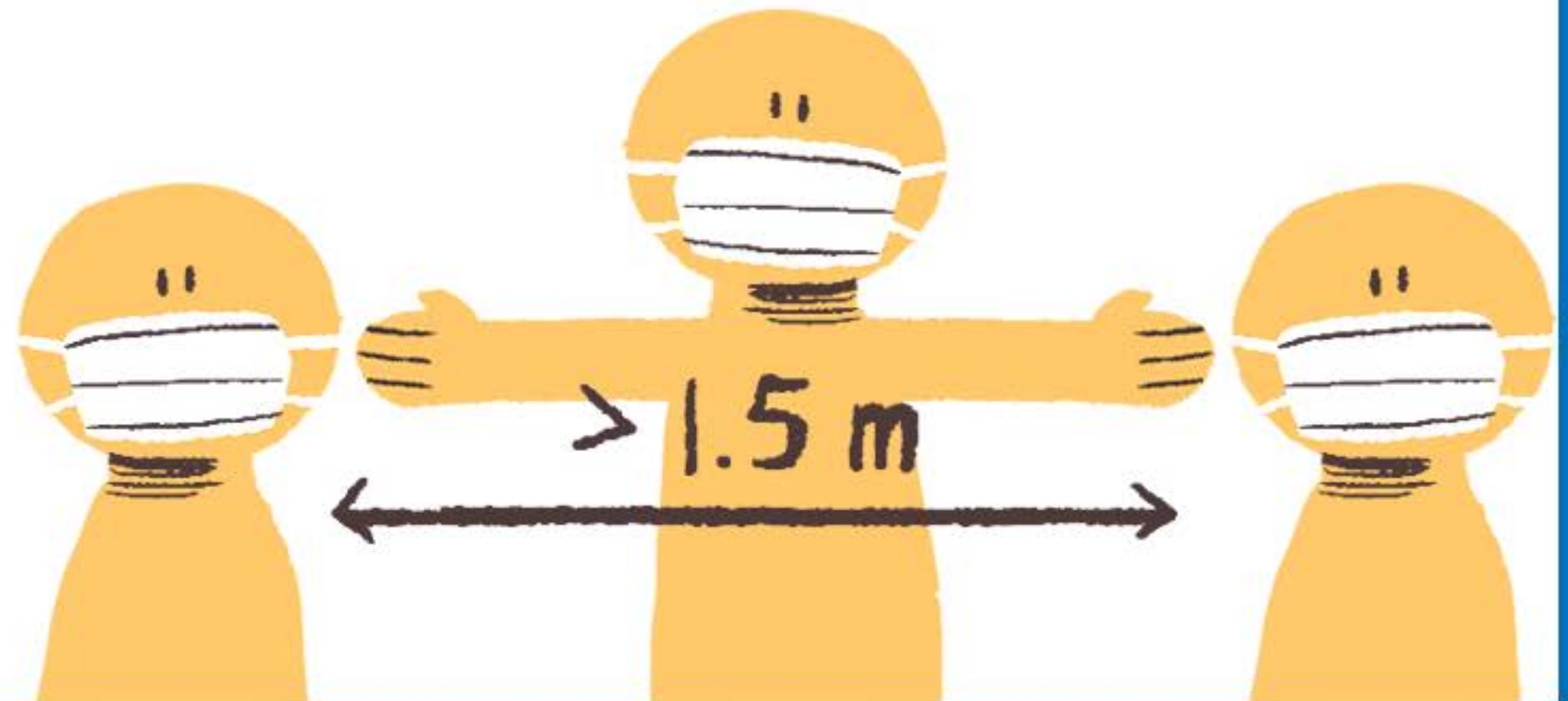


Staff members

When accompanying residents

2. Assist residents to maintain at least **1.5m** or more safe distances between each other.

- No kissing
- No hand-shaking
- No hugging



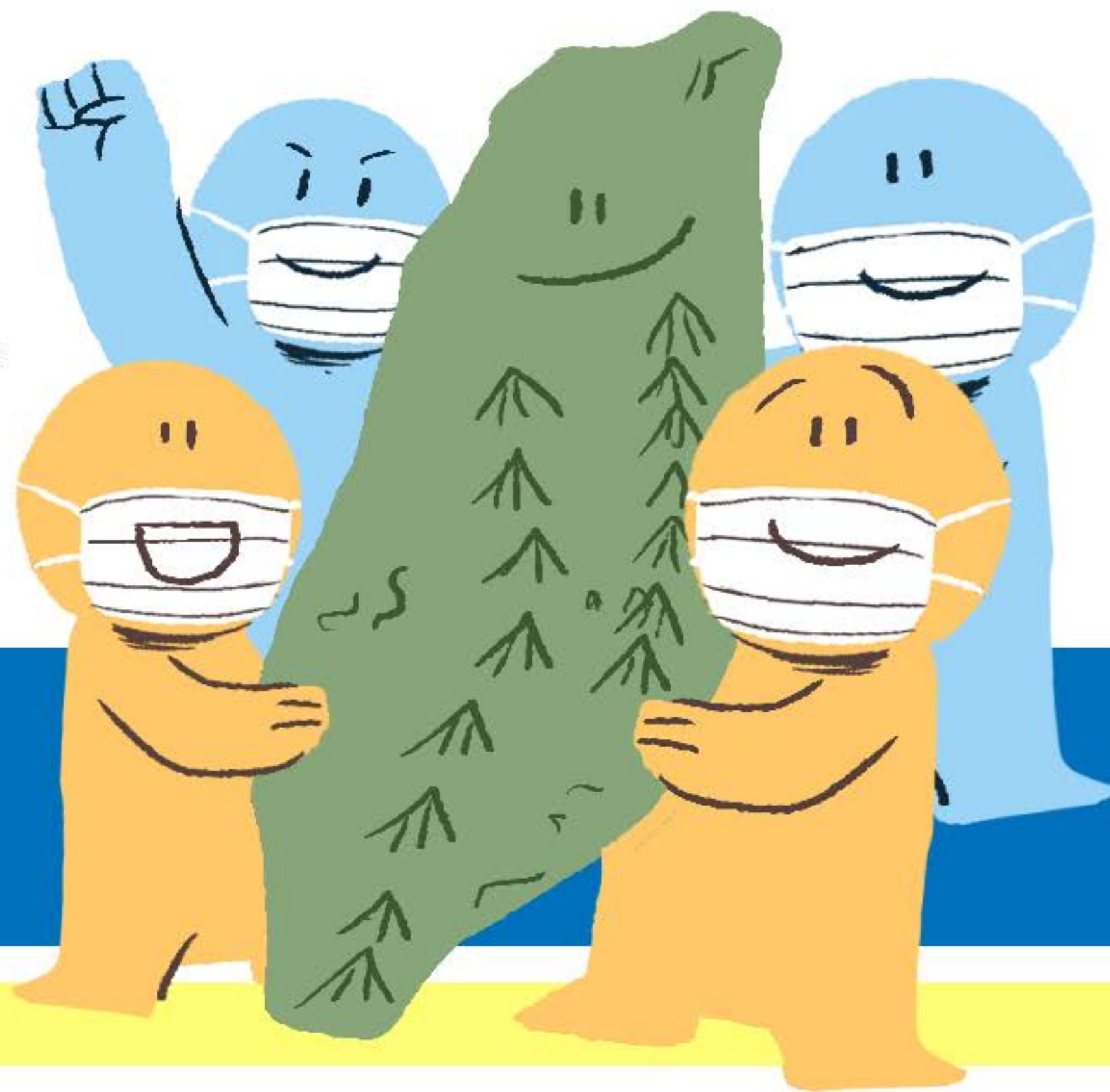


衛生福利部國民健康署

Health Promotion Administration, Ministry of Health and Welfare

Your Efforts Are Important
Strengths Behind Taiwan's
Epidemic Prevention!

Let Us Do Our Best
Together!





衛生福利部國民健康署

Health Promotion Administration, Ministry of Health and Welfare

*If you have any questions,
please call the toll-free communicable
disease reporting and consultation
hotline **1922***

COVID-19
Guidance for

**Long-term
Care Facility**



long-term care epidemic prevention information
(Section on COVID-19)

We thank the Changhua Nursing Home of the Ministry of Health and Welfare for providing the information above.

