

7

**Misplacing things and losing the ability to retrace steps**



9

**Withdrawal from work or social activities**



8

**Decreased or poor judgment**



10

**Changes in mood and personality**



# 10 Early Signs and Symptoms of Alzheimer's



1

## Memory loss that disrupts daily life

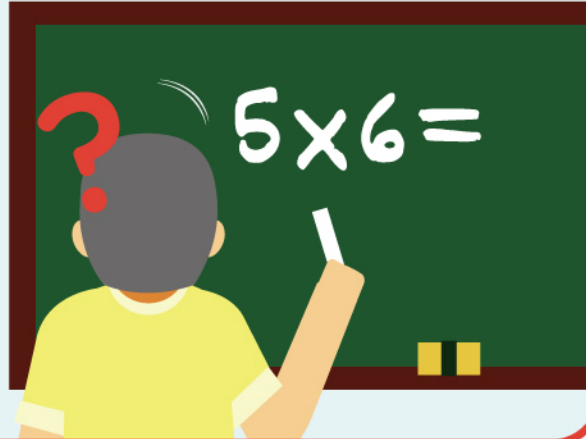
Have you taken your medicine, Mom?

Haven't I?



3

## Difficulty completing familiar tasks



5

## Trouble understanding visual images and spatial relationships

Who are you?



2

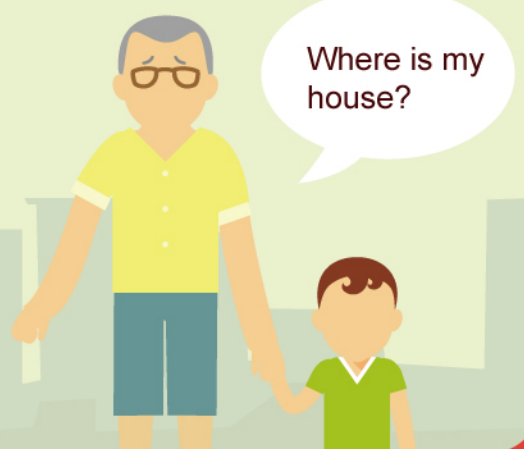
## Challenges in planning or solving problems



4

## Confusion with time or place

Where is my house?



6

## New problems with words in speaking or writing

I.....

